

2017

Completion of a comprehensive and statistically driven Jewish community study.

1976

Completion of a demographic survey of the Omaha Jewish community.

1974

Our current Jewish community campus was established.

1929

A door to door Jewish community analysis was completed.

1926

The Jewish Community Center opened its doors at the original location on 20th & Dodge.

1920

The Jewish Press began publication.

1903

The Jewish Federation of Omaha was established.

1871

What we know now as Temple Israel was founded as the first Jewish Congregation in Nebraska.

1854

Jewish settlers began to arrive in Omaha as it was first founded.

Years of Progress

2017 COMMUNITY STUDY A PORTRAIT OF JEWISH OMAHA

Join the Discovery!



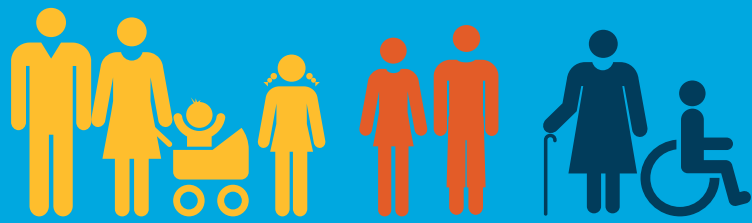
At 5,150 households, we're bigger than we thought!

5,150 Jewish households in Omaha.

8,800 Jewish persons

12,700 Persons living in Jewish households

Median Age is 46



Overall, our community is largely married and older with children at home. We also have a significant number of single people.

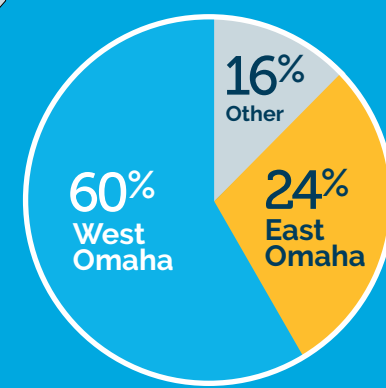
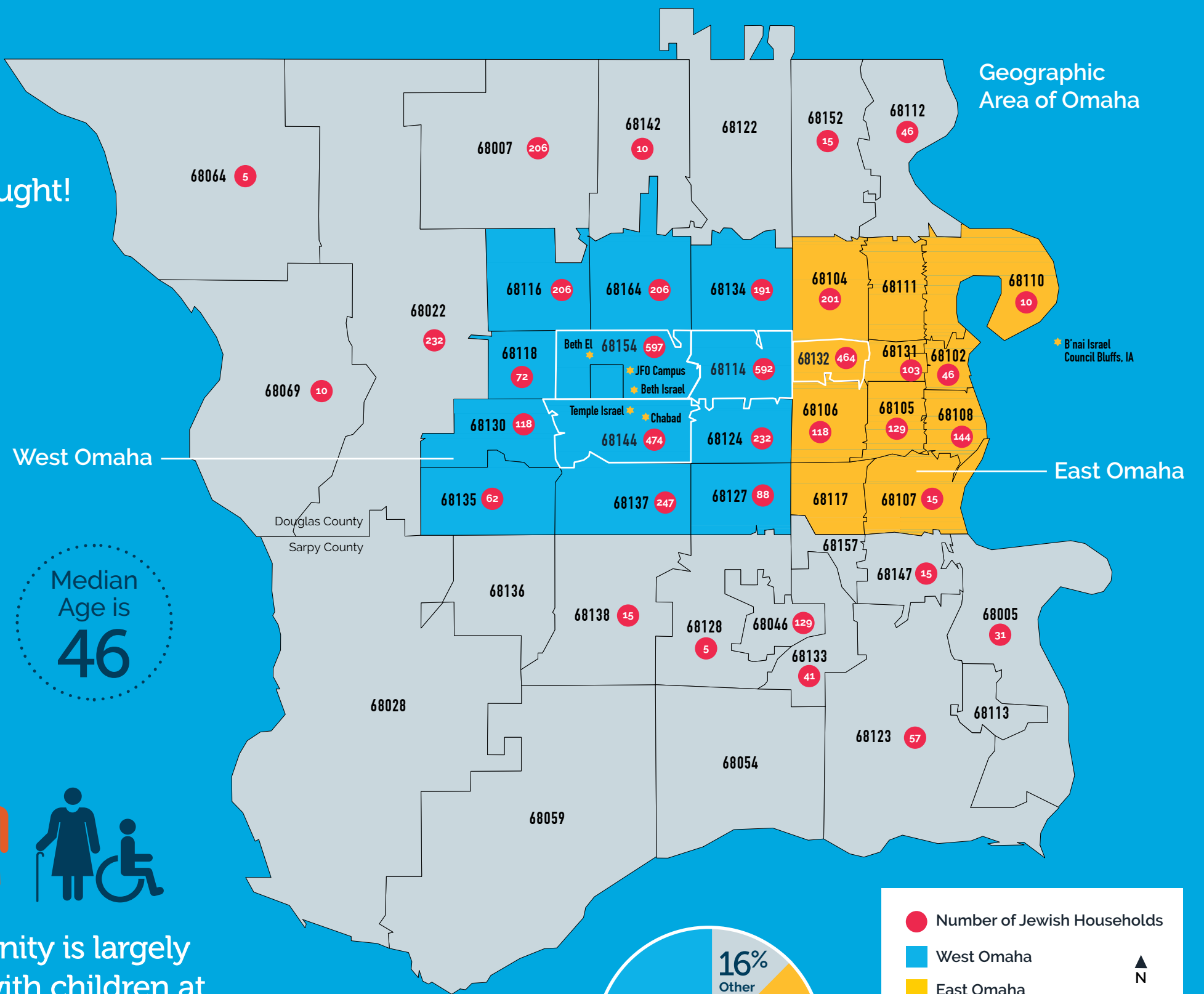
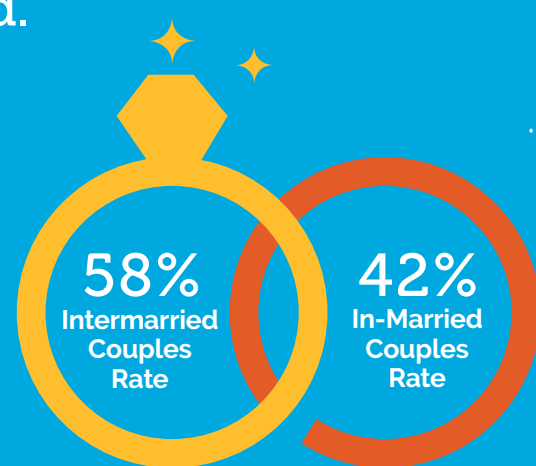
23% of households contain children

21% of Jews in Omaha are single

12% of persons age 75 and over live alone

Intermarriage is a continuing and rising trend.

Omaha Jewish households include 3,300 married couples.



WHERE WE LIVE IN OMAHA

The top 4 zip codes were 68154, 68144, 68114 and 68132. We have significant numbers in East Omaha as well as outlying areas like Elkhorn, Bennington, Papillion and Bellevue.



We continue to have deep roots in the community. 69% of us have lived here more than 20 years.



The complete report, methodology and findings can be found at www.jewishomaha.org

2017 COMMUNITY STUDY

A PORTRAIT OF JEWISH OMAHA

Join the Discovery!



WHY A COMMUNITY STUDY

2017 COMMUNITY STUDY

A PORTRAIT OF JEWISH OMAHA

This 2017 study will assist the Jewish Federation of Omaha, Jewish agencies, local synagogues, and Jewish organizations in developing the community's strengths and in designing projects and programs to address our needs. It will provide information to help the community set priorities for decades and beyond.

We collaborated with two highly experienced and trusted professionals:

- **Dr. Ira Sheskin**
Director of the Jewish Demography Project of the Sue and Leonard Miller Center for Contemporary Judaic Studies of the University of Miami
- **Dr. David Dutwin**
Executive Vice President and Chief Methodologist of SSRS

Surveying was completed in January 2017. A total of 150,109 calls were made, 29,951 calls were answered to complete 552 surveys. We achieved above average participation with a response rate of 56% and a cooperation rate of 91%. If you participated, thank you.

The complete report, methodology and findings can be found at www.jewishomaha.org

OUR POPULATION

5,150 Jewish households in Omaha

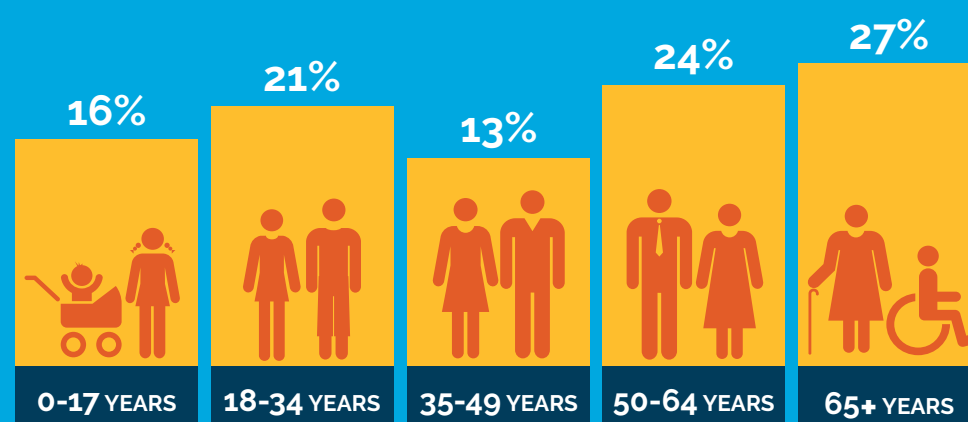
A Jewish household includes at least one self-identified Jewish adult.

8,800 Jewish persons

A Jewish person is an adult over the age of 18 who considers him/herself Jewish or a child being raised as Jewish.

12,700 persons living in Jewish households

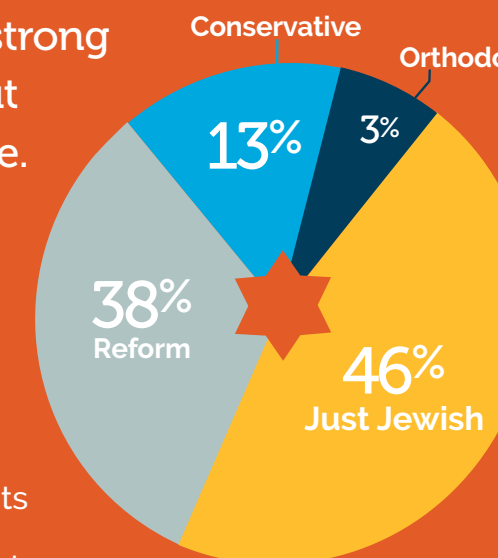
This number includes all persons - Jewish and non-Jewish, who are living in a household with a least one self-identified Jewish adult.



Age Distribution of Jews in Jewish Households (Based on 8,800 Jewish people)

HOW WE SELF-IDENTIFY

Our population identifies largely as "Just Jewish", with a strong level of engagement, but less religious observance. We feel welcome but not necessarily a part of the community.



97% of respondents feel very or somewhat welcome at synagogue, JCC or other Jewish organizations.

95% of respondents are proud to be Jewish.

78% of respondents have a strong sense of belonging to the Jewish people.

49% of respondents feel very much or somewhat a part of the Omaha Jewish community.

WHO WE ARE

Our Jewish population is older than the general population.

Average Median Age	
Age 46 Jewish Omaha	Age 34 All of Omaha
Age 56 Jewish America	Age 38 All of America

We are a well educated and financially stable community.

69% Jewish Omaha

29% Americans



Have a college degree

42% of respondents earn \$100,000 or more annually.

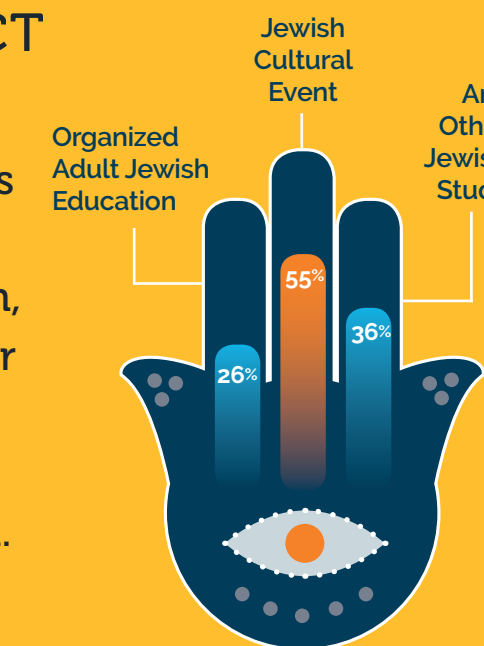
12% of households are low income households (earned under \$25,000 in 2015).

1% of respondents fall below the poverty line.

HOW WE CONNECT

Cultural experiences speak more to our adults than opportunities for formal Jewish education, although over half of our adults participated in some formal Jewish education in their youth.

Our agencies are generally well known and well regarded.



Attended adult Jewish education in the past year

88% of the respondents have an emotional attachment to Israel.

85% of Jewish households reported donating to any charity - either Jewish or non Jewish in the past year.

80% of our children who went to a day camp in 2016 went to a Jewish day camp.

SOCIAL SERVICE NEEDS

The study identified these needs as opportunities to address:



25% of households contain a health-limited member.

24% of households age 75 and over need in-home health care.

20% of households with adults age 15-64 needed job counseling in the past year.

OUR NEXT STEPS

- Community conversation and focus groups
- Create priorities, measurements and scorecard
- Create steps to allocate funds
- Release three year strategic plan and measurements aligned with allocation changes
- Implement action plan



Community Study Committee of the Jewish Federation of Omaha's Planning & Community Engagement Committee

- | | |
|--------------------------|--|
| Janie Murow, Chair | Alan Potash, Chief Executive Officer |
| Rabbi Steven Abraham | Diane Stamp, Assistant to CEO |
| Bob Belgrade | Jennie Gates Beckman, Director of Community Engagement & Education |
| Rabbi Deana Berezin | Jim Fried |
| Rabbi Ari Dembitzer | Bruce Friedlander |
| Jim Fried | Rhonda Saferstein Hansen |
| Bruce Friedlander | Marty Ricks |
| Rhonda Saferstein Hansen | Norm Sheldon |
| Marty Ricks | Mike Siegel |
| Norm Sheldon | Geoff Silverstein |
| Mike Siegel | Julee Katzman, Special Projects Coordinator |
| Geoff Silverstein | |



Jewish Federation of Omaha Board of Directors

- | | | |
|------------------------------|----------------|--------------------------------------|
| Bruce Friedlander, President | Bruce Goldberg | Mike Norton |
| Toba Cohen-Dunning | Richard Heyman | Carl Riekes |
| Eric Dunning | Dana Kaufman | Mike Siegel |
| Jason Epstein | Jon Meyers | Jay Noddle, Immediate Past President |
| Jim Fried | Scott Meyerson | |